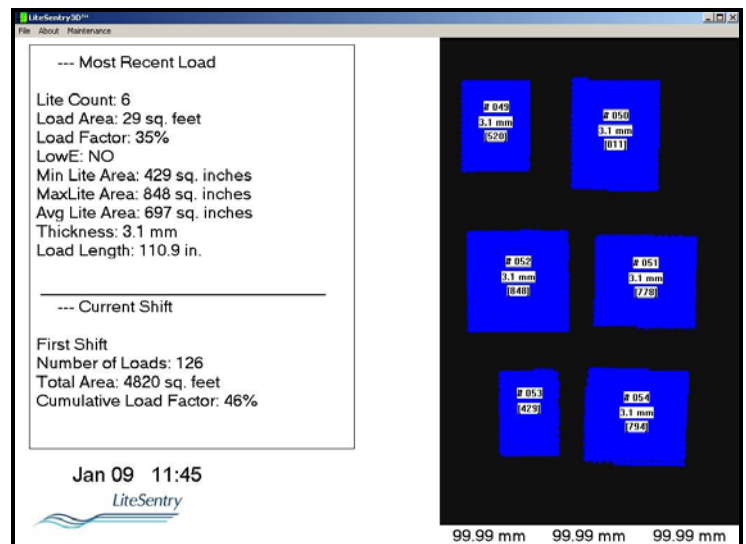


Owl™ by LiteSentry™ for Closed-Loop Tempering Furnace Control



The Owl by LiteSentry Mass Measurement System increases productivity and improves quality from any batch-tempering furnace. The system measures mass of the glass entering the furnace and the lowE coating on the glass. Information is instantly sent to the furnace, the recipe is chosen and heat-time or heat profile adjusted. Automatic recipe selection and heat-time optimization result in over 10% increase in throughputs.

- ◆ Optical, machine vision measurement technology
- ◆ Non-contact, real-time measurement of glass size, thickness and lowE coating
- ◆ Automatic furnace control selects recipe and heat-time
- ◆ Optimized heat-time saves seconds per load
- ◆ Productivity and throughput improve over 10%
- ◆ Eliminates lost production due to recipe changes
- ◆ Eliminates operator errors due to incorrect inputs
- ◆ Improves optical quality of tempered lites. Optimized heat-time or heat profile prevents furnace from overheating small loads.



LiteSentry Corporation
 Visual Inspection Systems for Glass
www.litesentry.com

User Interface Display

210 County Road * P.O. Box 227 * Dundas, MN 55019-0227
 +1.507.645.2600 * Fax +1.612.573.6541 * sales@litesentry.com

SPECIFICATIONS

Owl™ by LiteSentry™ Mass Measurement & Closed-Loop Furnace Control

Application: Batch Tempering furnaces of any style

Substrate: 2 mm – 15 mm thick float glass of any style

Inspection area: 500 to 2,500 mm (20 to 100 inch) conveyor width

Optical System: CCD high resolution industrial digital cameras with microsecond frame capture capability. Lighting and optics designed for dynamic size measurement.

Outputs

- ◆ Direct I/O interface to furnace control system
- ◆ High-resolution monitor for operator interface, displaying system status and statistics for current load
- ◆ Conveyor bed yield or percent bed utilization
- ◆ Cumulative yield for shift or day
- ◆ Database (.mdb format) accessible from local CD-R drive or LAN
- ◆ Database reports yield and mass throughput by time – user may sort by shift, day or other time period

Environmental

- ◆ NEMA 12 enclosure with integral air conditioner
- ◆ 4-50 deg C (40-122 deg F)
- ◆ 0-90% relative humidity
- ◆ Vibration isolation



LiteSentry Corporation
Visual Inspection Systems for Glass
www.litesentry.com