

HAWKEYE[®] by LiteSentry[™]

Glass Inspection System for Scratches and Defects

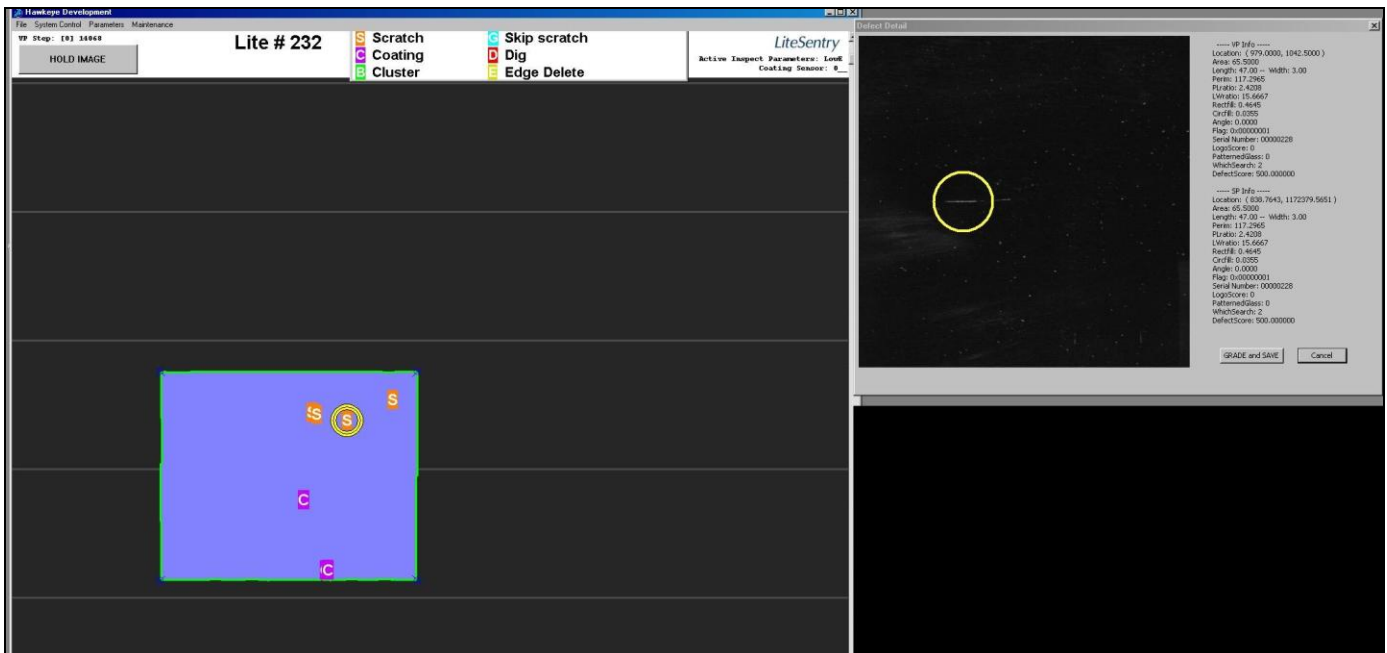


The Hawkeye[®] by LiteSentry[™] is a high-resolution camera-based inspection system for glass. Inspects both front and rear surfaces of monolithic glass moving on the fabrication line. This on-line defect inspection system operates at conveyor velocities up to 700 mm/s and integrates seamlessly into IG or lamination lines.

- ◆ Prevents defects from proceeding to high value-added operations.
- ◆ Keeps defects out of your customer's sight.
- ◆ Improved quality = increased profit

Applications:

- ◆ Insulated Glass (IG), Lamination and final packaging.
- ◆ 300 to 2440 mm (12 to 96 inch) height or width.



Display showing glass with defects noted and pop-up of scratch

LiteSentry

LiteSentry Corporation
 210 County Road * P.O. Box 227 * Dundas, MN 55019-0227
 +1.507.645.2600 * www.litesentry.com

Setting the Standard in Glass Inspection

Patented / Patent Pending